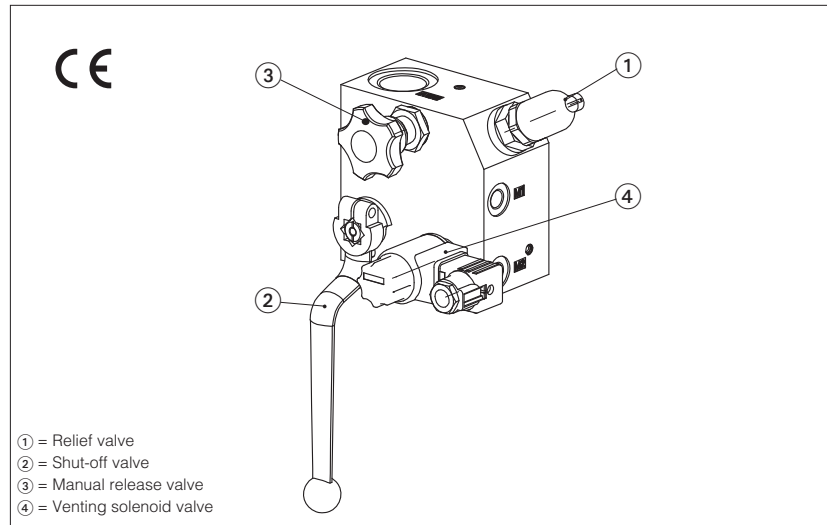


PED safety manifolds for accumulators type BSA

In line mounting - G 1/2" and G 3/4" threaded ports



PED safety manifolds for accumulators type BSA are equipped with relief valves conforming to PED Directive 2014/68/EU (see tab. SP004).

The safety function is ensured by discharging the excess flow across the relief valve ①.

They are equipped with manual shut-off valves ②, manual release valve ③ and venting valve with electric driving as optional ④.

These manifolds are suitable for any hydraulic circuit where there are one or more accumulators.

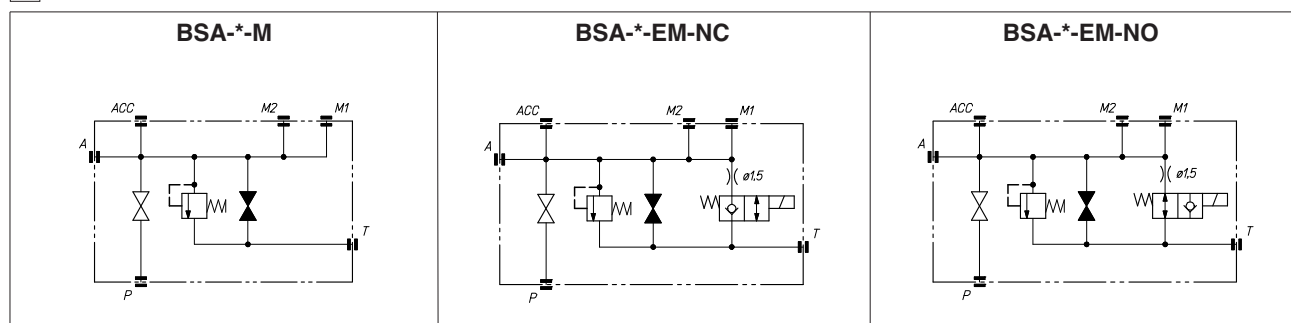
The manifolds are designed to work in hydraulic systems with oil or synthetic fluids having similar lubricating characteristics..

Max flow: 70, 200 l/min respectively
Pressure up to 350 bar

1 MODEL CODE

BSA	-	10	-	EM	-	NO	-	24DC	/	235	/	PED	**	/*
Safety manifold													Synthetic fluids WG = water glycol PE = phosphate ester	
Size: 05 = G 1/2" 10 = G 3/4" Other sizes are available on request													Design number	
Release mode: EM = electric/manual M = manual													PED = Conforming to 2014/68/EU (tab. C010 - www.atos.com)	
Venting solenoid valve: NO = normally open NC = normally closed													Required setting pressure /*** = setting @ 50 l/min]	
Electric voltage: - = manual version 12 DC = 12 V _{DC} 24 DC = 24 V _{DC} 110 AC = 110 V _{AC} 220 AC = 220 V _{AC}														

2 HYDRAULIC CHARACTERISTICS

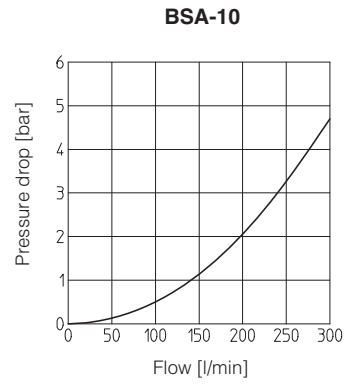
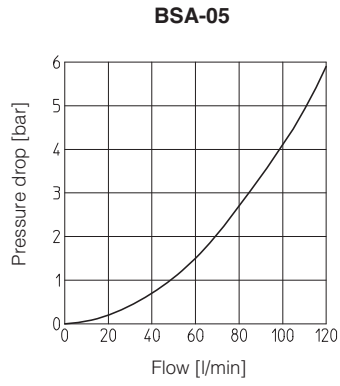


Model		05	10
Pressure range of safety valve	[bar]	25 ÷ 350	
Max flow of safety valve	[l/min]	60	100
Max flow recommended P←→ACC	[l/min]	70	200
Max pressure	[bar]	350	

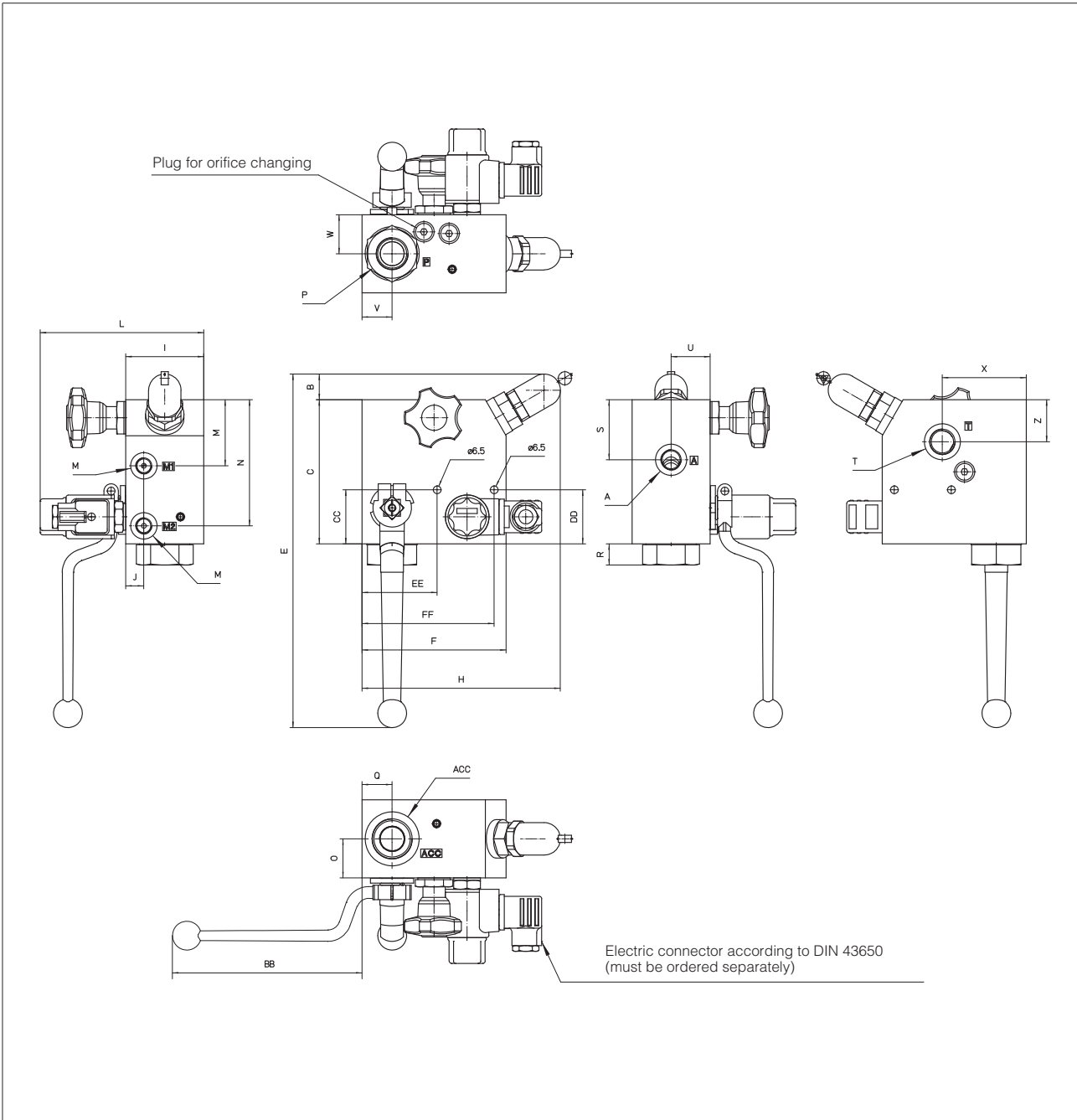
3 MAIN CHARACTERISTICS

Installation position	Any position.
Hydraulic connection	BSA-05 : P = G 1/2" T = G 3/8" A = G 3/8" ACC = G 1/2" M* = G 1/4" BSA-10 : P = G 3/4" T = G 1/2" A = G 3/8" ACC = G 1" M* = G 1/4"
Fluid	Hydraulic oil as per DIN 51524...535; for other fluids contact our technical office
Recommended viscosity	15 ÷ 100 mm ² /s at 40°C (ISO VG 15 ÷ 100)
Fluid contamination class	ISO 19/16, achieved with in line filters at 25 µm and β ₂₅ ≥ 75 (recommended)
Fluid temperature	-20°C +60°C (standard and /WG seals) -20°C +80°C (/PE seals)
Ambient temperature	from -15°C to +70°C

4 FLOW VERSUS PRESSURE DROP DIAGRAMS based on mineral oil ISO VG 46 at 50°C



5 DIMENSIONS [mm]



Model	B	C	E	F	H	I	J	L	M	N	O	Q	R	S	U	V	W	X	Z	BB	CC	DD	EE	FF	ACC	A	P	T	M*	Mass [Kg]
BSA-05	60	95	240	100	123	55	15	87	30	80	23	20	18,7	47,5	30	20	23	80	70	88	65	45	5	95	G 1/2"	G 3/8"	G 1/2"	G 3/8"	G 1/4"	4,6
BSA-10	27	120	300	120	170	65	15	137	55	105	32,5	25	17,6	50	32,5	25	32,5	70	35	158	45	45	62,5	110	G 1"	G 3/8"	G 3/4"	G 1/2"	G 1/4"	7,5

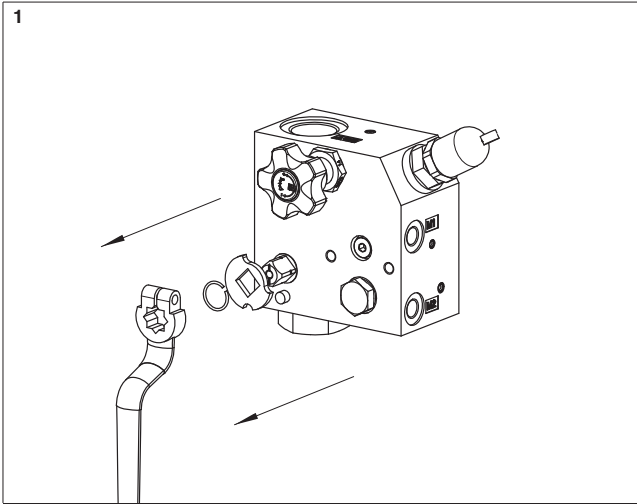
2 MAINTENANCE ISTRUCTIONS

For safety reasons BSA manifold is provided with clamping lever locked in the open position. In case you need to unlock the lever, follow the following instructions

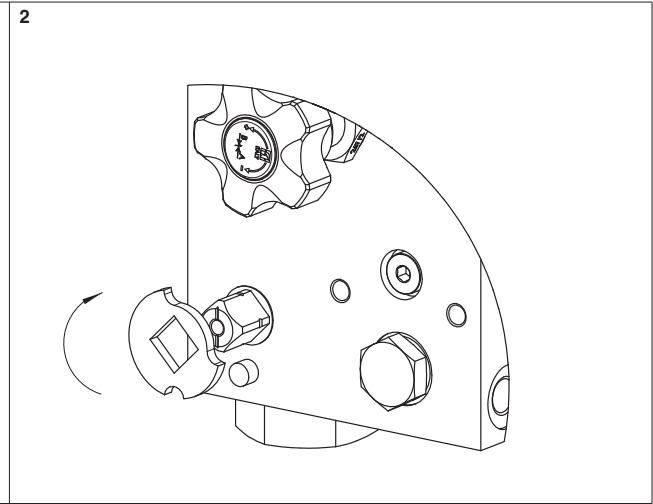


ATTENTION:

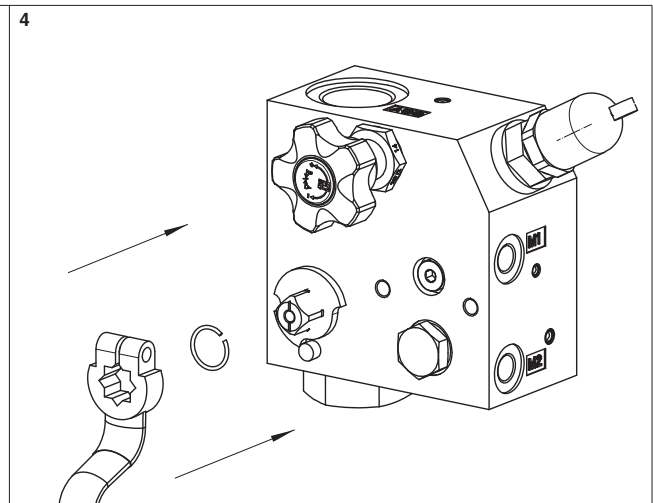
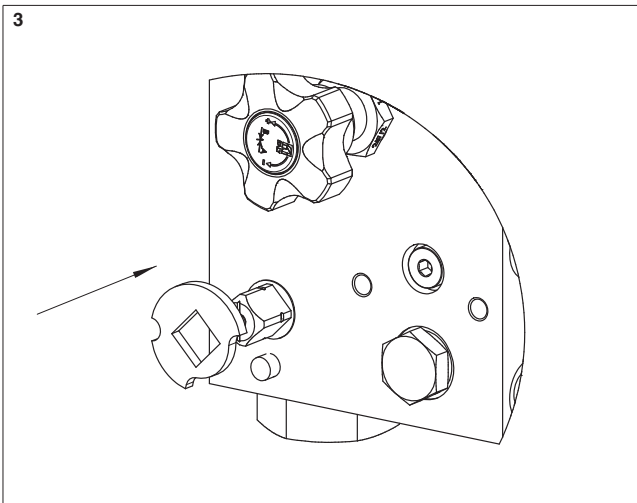
- System under pressure before performing any operation turn off and discharge the pressure of the circuit.



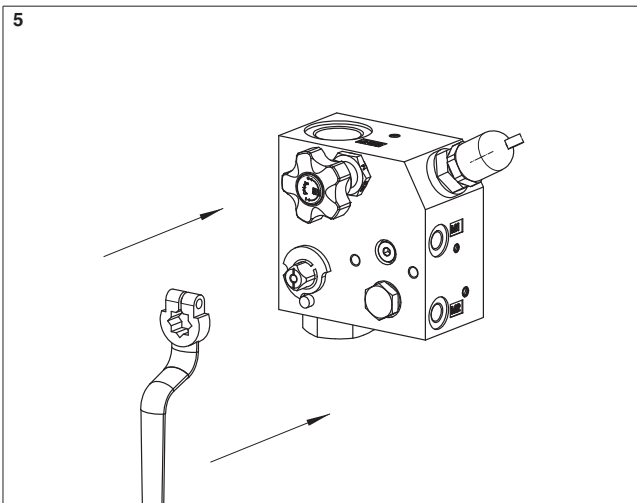
1 Pull out the clamping lever, the elastic ring and the pressure washer



2 Rotate 90° clockwise the pressure washer



4 Reinsert the pressure washer



5 Reinsert the elastic ring and the clamping lever

